



Khram (*Indigoferatinctoria*), Blue Cloth, River Basin Ramsa Site and Local Culture in Specific Area of Indochina

Pathum Sookaromdee¹, Viroj Wiwanitkit²

¹Private Academic Consultant, Bangkok Thailand.

²Honorary professor, Dr DY Patil University, Pune, India.

Abstract

Khram (*Indigoferatinctoria*) is a small bean type plant with its habitat in tropical country. The plant can give blue color and becomes an important natural dye. In specific part of Indochina, the Khram is a common local plant and it is associated with local garment blue clothes culture. Additionally, the area that natural plant is common is a specific river basin area namely MaenamSonkhram, which is already been registered as important ramsa site in Southeast Asia.

Keywords: Khram, blue, cloth, river, ramsa site, culture

Introduction

Khram (*Indigoferatinctoria*) is a small bean type plant with its habitat in tropical country. The plant can give blue color and becomes an important natural dye. In specific part of Indochina, the Khram is a common local plant and it is associated with local garment blue clothes culture. Additionally, the area that natural plant is common is a specific river basin area namely MaenamSonkhram, which is already been registered as important ramsa site in Southeast Asia.

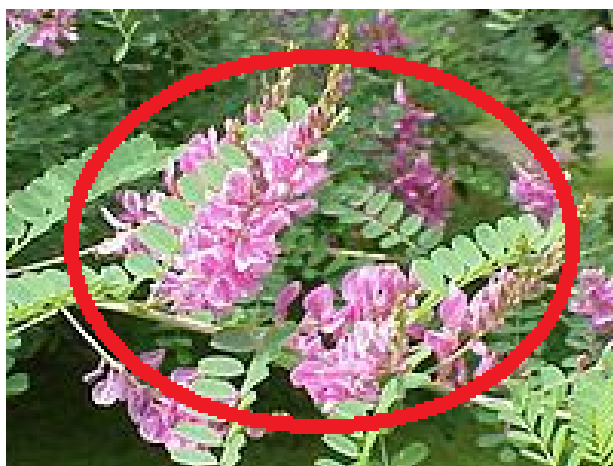
Cultural geographic background

The specific area in Sakonnakorn province and Nakornpanom provinces of Thailand are the areas that the river namely Maenam Songkhram passes. Local word root for “Songkharm” means “Forest” and “the plant, *Indigoferatinctoria*”.

This short river is an important water reservoir for local people for fishery. Additionally, there are many local plants namely “Khram” along the river banks.

Khram (*Indigoferatinctoria*) is a small bean type plant. It is well grown in tropical country. This plant can give blue color. Blue color from this plant becomes an important natural dye. The local people use the blue dye for coloring the local cloth product. Local people are local ethnic group originated for Lao and have skill on manmade silk and cotton weaving. The local clothes have been widely used and famous product. It is accepted as an important local product of this area.

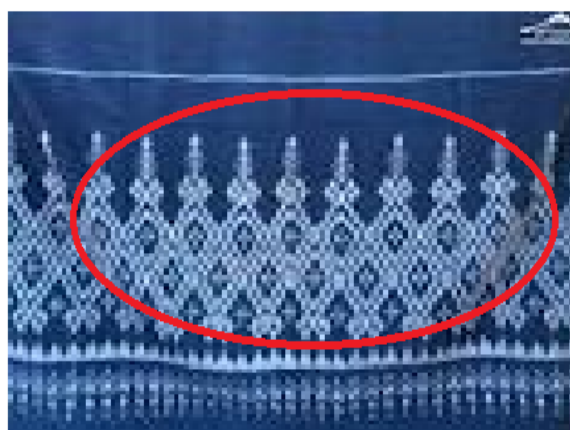
At present, the river basin is also registered as Ramsar site and become natural resource for protection.



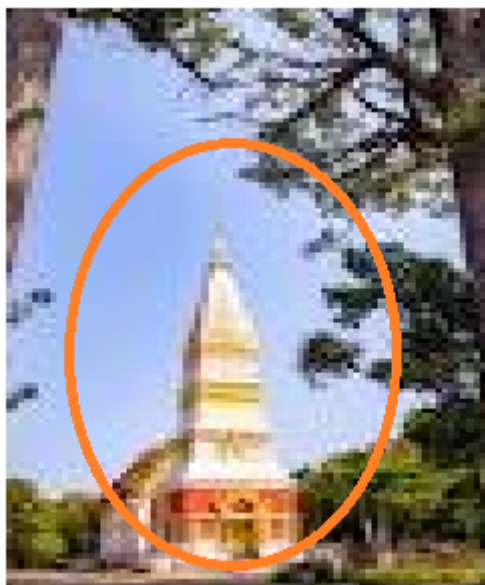
A. The plant, Khram



B. River and Ramsar site, Songkhram river



C. Local wisdom on cloth namely PhaKhram



**D. Local archeological site, Phrathat Srisongkham
Figure 1. Khram and river basin cultural system**

Discussion

Many rivers have their important significant cultures. A world famous river, Nile river, has the papyrus culture [1]. For the case of Songkhram river, the Khram culture might be indicated. In fact, this area has a very long history. More than 1,000 years old archeological sites exist in this area. Local famous handicraft and lifestyle of ethnic group also supports the cultural system of this river basin area.

The Ramsar site can help protect natural resource. It is also a way for protection of the local archeological site, local wisdom and way of life. This case study of cultural river basin can be comparative to other places around the world.

Conflict of interest

None

References

1. Elkasrawy S. Creative Cultural Tourism in Egypt: Case Study of Papyrus and Pottery. International Journal of Heritage, Tourism and Hospitality 2020; 16 215-225.