



## Ectrodactyly and Buddha Image with Finger/ Toe Depletion: A Specific Reflection of Human Anatomical Anomaly via Religious Artifact

Pathum Sooakromdee<sup>1</sup>, Viroj Wiwanitkit<sup>2</sup>

<sup>1</sup>Private Academic Consultant, Bangkok, Thailand.

<sup>2</sup>Honorary Professor, DY Patil Medical College, Pune, India.

### Abstract

A typical humanistic phenomena is the artifact's reflection of mankind. In some specific situations, the sculpture may both depict the local circumstances and the variations in human structure. The authors of this article present and analyse the incidents involving Buddha statues in Thailand, a Southeast Asian nation. The bizarre Buddha may be a sign of a medical condition called ectrodactyly, a rare congenital defect.

**Keywords:** Buddha image, ectrodactyly, anomaly, medical, art.

### Introduction

The reflection of mankind in the item is a common humanistic occurrence. In some specific instances, the sculpture might represent both the local conditions and the differences in human structure. The authors of this page describe and examine occurrences involving Buddha statues that occurred in Thailand, a country in Southeast Asia. The strange Buddha might be a symptom of ectrodactyly, a rare birth deformity and a health problem.

### Case studies

In some specific Buddhist monasteries, the ancient Buddha image with depletion of finger or toelocates. The famous cases include:

A. Buddha image with deficit toes

- Wat Kao Yi Sarn

This temple is at Samutsonkham province. The temple locates near the sea. There is an old reclining Buddha image with only 9 toes

## B. Buddha iamges with deficit fingers

- Wat Kao Niew

This temple locates at Uthaihani. The local name represent the meaning of nine. The main Buddha image at this temple has 9 fingers. The left hand of the Buddha image has only 4 fingers.

- Wat Kangkao

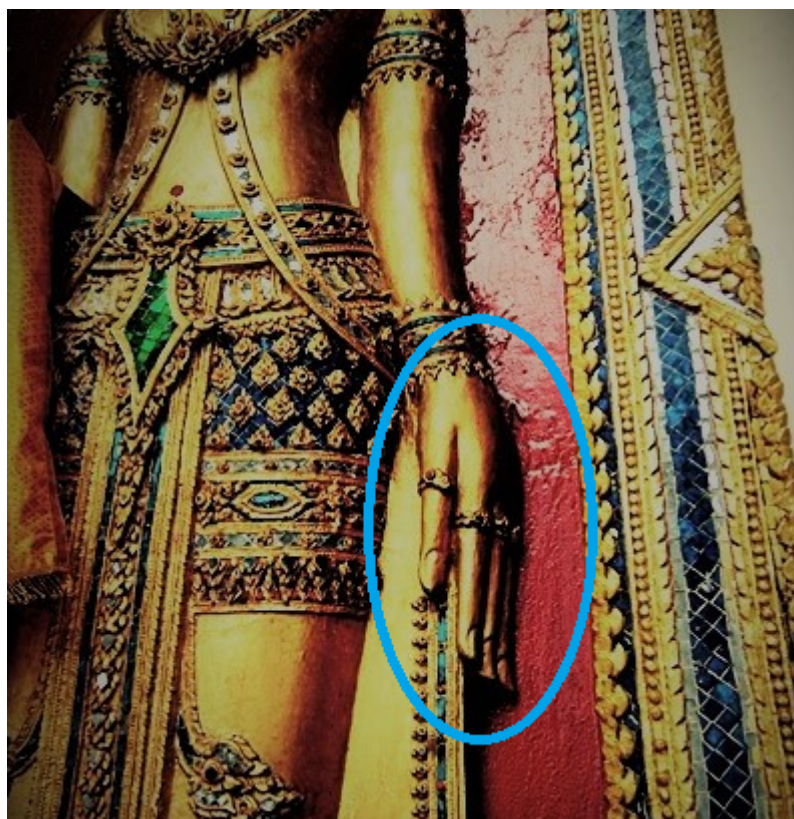
This temple is at Nonthaburi province. This main Buddha image of the temple has only 9 fingers and locally name Lang Pho Kao (Kao is a local language mean nine). The left hand of the Buddha image has only 4 fingers.



**A. At Wat Kao Yi Sarn**



**B. At Wat Kao Niew**



C. At Wat Kangkao

Figure 1. Some Buddha images in Thailand with ectrodactyly

## Discussion

Ectrodactyly is an important medical congenital anomaly [1 - 2]. Ectrodactyly, sometimes referred to as Split hand/foot deformity, is an uncommon limb malformation with an autosomal dominant inheritance and variable penetrance that is frequently referred to as "lobster claw hand." The hands and feet typically have midline clefts with syndactyly [1 - 2]. Even though it is uncommon, it does exist. There are therefore without a doubt many persons who have polydactyly. The history of the ectrodactyly person may have been preserved in the past through a local relic. It's interesting to see how the Buddha image reflects reality. This essay makes it quite evident that ectrodactyly should have been present in the area under study for a very long period.

## References

- Okamoto N. Ectrodactyly-ectodermal dysplasia-clefting syndrome. *Ryoikibetsu Shokogun Shirizu*. 2001; (33): 615-7.
- King NM, Tong MC, Ling JY. The ectrodactyly-ectodermal dysplasia-clefting syndrome: a literature review and case report. *Quintessence Int*. 1994 Oct; 25 (10): 731-6.